

# Outer Dowsing Offshore Wind

## Environmental Statement

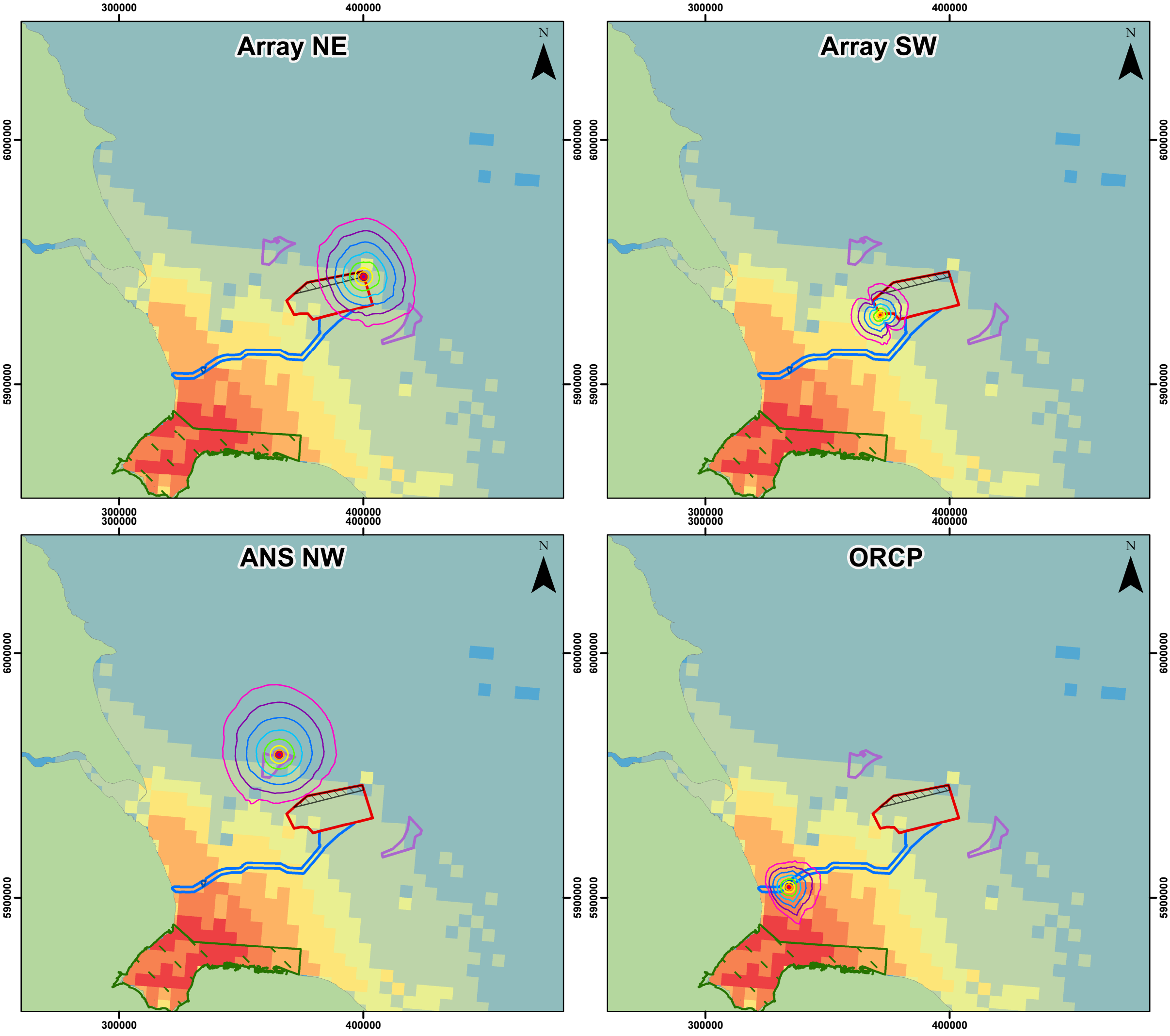
Marine Mammals Revised Figures as  
requested in Natural England's RR  
(RR-045)

Date: December 2024

Document Reference: 20.13

Revision: 1.0

Company:	<b>Outer Dowsing Offshore Wind</b>			Asset:	<b>Whole Asset</b>	
Project:	<b>Whole Wind Farm</b>			Sub Project/Package:	Whole Asset	
Document Title or Description:	Marine Mammals Revised Figures as requested in Natural England's RR (RR-045)					
Internal Document Number:	PP1-ODOW-DEV-CS-MAP-0020			3 <sup>rd</sup> Party Doc No (If applicable):	N/A	
Rev No.	Date	Status / Reason for Issue	Author	Checked by	Reviewed by	Approved by
1.0	December 2024	Deadline 3	GoBe	Outer Dowsing	Outer Dowsing	Outer Dowsing



### Legend

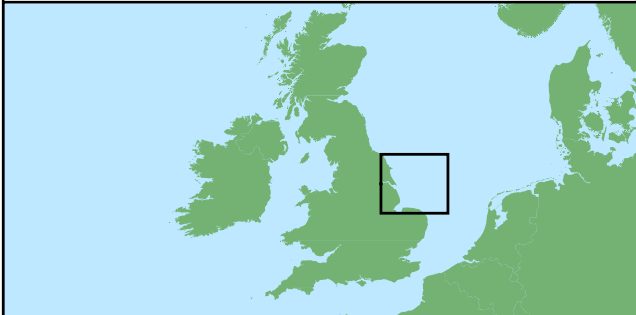
- Array Area
- Offshore Restricted Build Area
- Offshore Export Cable Corridor
- ORCP Area
- Artificial Nesting Structure Area
- The Wash and North Norfolk SAC
- Piling Locations

### Monopile 5dB SELss Disturbance Contours (dB)

- 145
- 150
- 155
- 160
- 165
- 170
- 175
- 180

### Harbour Seals % At-Sea Population per 25km<sup>2</sup> (Carter et al. 2022)

- 0
- 0 - 0.001
- 0.001 - 0.005
- 0.005 - 0.01
- 0.01 - 0.025
- 0.025 - 0.05
- 0.05 - 0.1
- >0.1



Coordinate System: WGS 1984 UTM Zone 31N

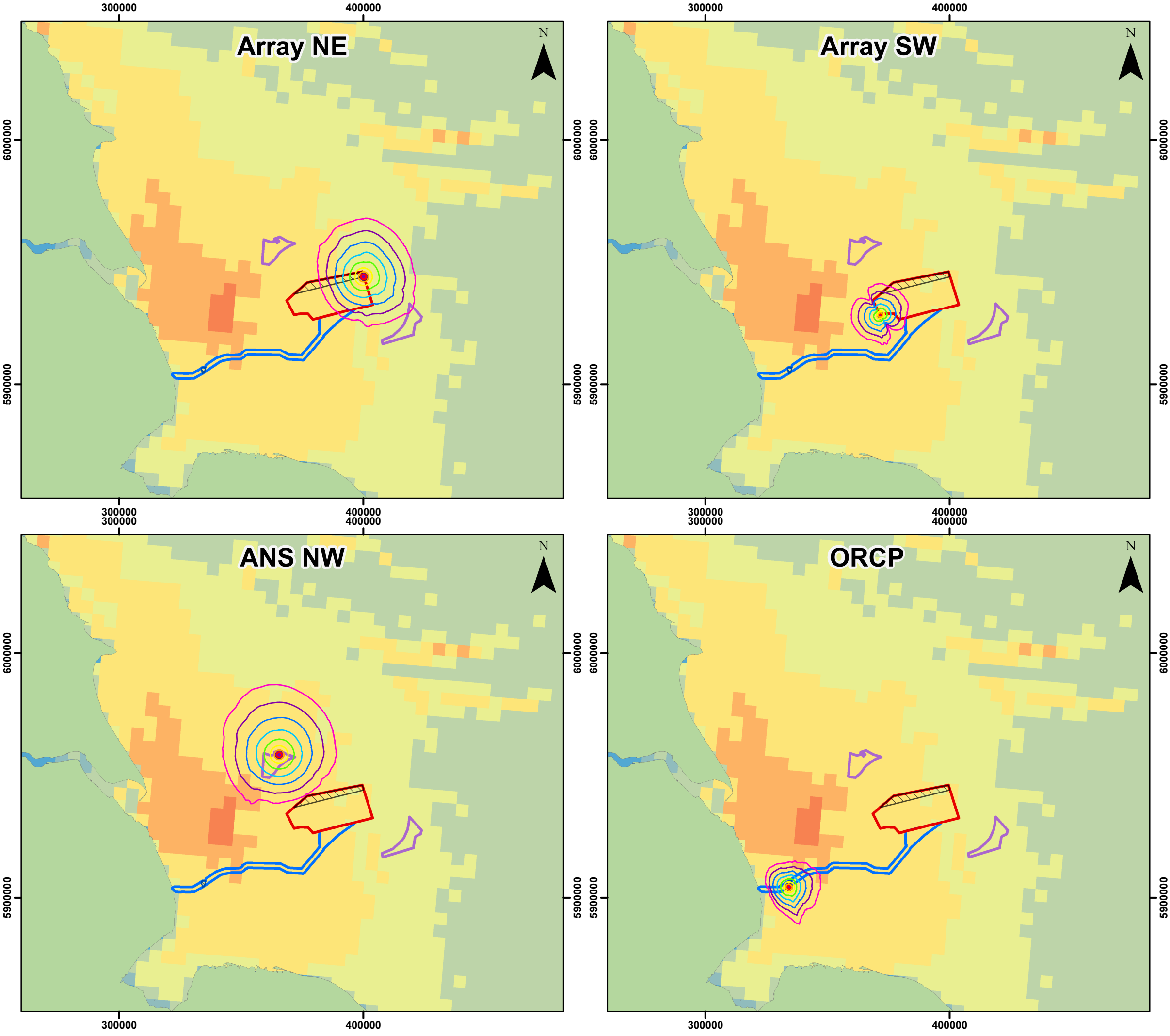
0 50 100 km

Scale: 1:1,500,000 A3 Page Size

Environmental Statement

Harbour seal worst case behavioural disturbance contours

Figure 11.4



**Legend**

- Array Area
- Offshore Restricted Build Area
- Offshore Export Cable Corridor
- ORCP Area
- Artificial Nesting Structure Area
- Piling Locations

**Monopile 5dB SELss Disturbance Contours (dB)**

- 145
- 150
- 155
- 160
- 165
- 170
- 175
- 180

**Grey Seals % At-Sea Population per 25km<sup>2</sup> (Carter et al. 2022)**

- 0
- 0 - 0.001
- 0.001 - 0.005
- 0.005 - 0.01
- 0.01 - 0.025
- 0.025 - 0.05
- 0.05 - 0.1
- >0.1



Coordinate System: WGS 1984 UTM Zone 31N

0 50 100 km

Scale: 1:1,500,000 A3 Page Size

Environmental Statement

Grey seal worst case behavioural disturbance contours

Figure 11.5

